



WOMENS DRESS SET

summer 2011 • june - aug



1.



+



White or Black-&-White top with Black Trousers

OR...if you so desire:

Black or Black-&-White top with White Trousers



+



[TIP: Wear BRIGHT shoes for a pop!]

2.



+



Honey [NOTE: a scarf may be worn around the neck for color]
not gold, not pale yellow, the color of...honey

Trouser Jeans* dress trousers
[trouser-cut pants in denim material]

3.



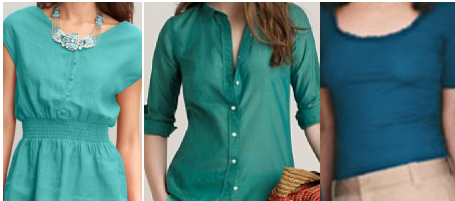
+



Melon
not pink, not orange, just like the inside of a watermelon

Brown dress trousers

4.



+



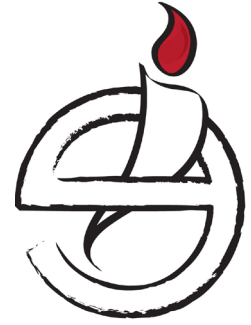
Turquoise Family: Light, Mid, Deep
not aqua! picture a piece of turquoise jewelry

Heather Gray dress trousers
[NOTE: this is LIGHTER than fall/winter sets]



MENS DRESS SET

summer 2011 • june - aug



1.



+



White shirt. Or, Black shirt.
[for the Johnny Cash look]

Black dress pants

2.



+



Honey
not gold, not pale yellow, the color of...honey.

Dark Wash Jeans

3.



+



Melon/Coral
not pink, not orange, just like the inside of a watermelon

Brown dress pants

4.



+



Deep Teal
from the winter set

[Light] Gray dress pants
NOTE: lighter gray than fall/winter sets.

* Note on Set #2:
LL Bean has polos and button shirts that are the right shade of Yellow. It's called "Beeswax." Otherwise, a light gray polo or button-down shirt is just dandy.